

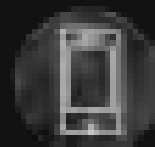
# Smart Spider Powered Ascender

Fast Charging

Longer working life



POWERFUL MOTOR



APP CONTROL



CHANGEABLE SPEED CONTROL



FAST CHARGING



MULTIPLE APPLICATION  
SCENARIOS



SUPER DURABLE  
OUTER CASE



## Application scenarios

Multi core function



Height access

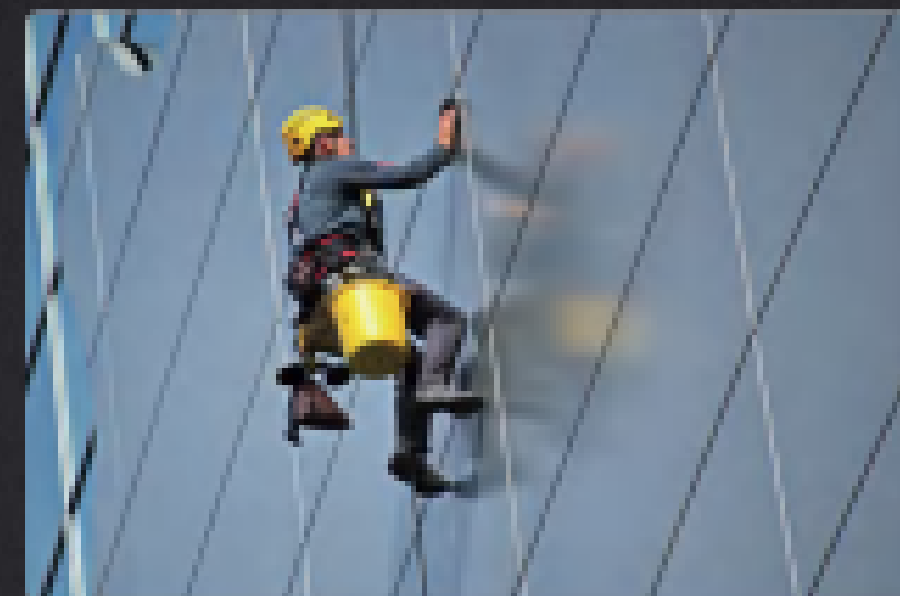
Wind turbine/blade  
maintenance

Power overhaul

Rescue & search

Bridge examine

Skyscraper maintain



Building exterior  
wall repairing

Building facade cleaning



Stage construction

Offshore service

Industrial service

Tree maintenance

# Light alloy material cover Hard-wearing durable life

Aerospace light alloy material manufactured  
safety & comfortable to use  
Smooth feeling



14.3KG  
WEIGHT

## MODE ENERGY BLOCK

Self-developed Mode energy power management system

- Power charge and discharge protection
- Undervoltage, over current, over discharge, short circuit protection
- High temperature and low temperature active protection function

**200KG**

MAXIMUM LOADING

**330M**

MAXIMUM CLIMBING DISTANCE

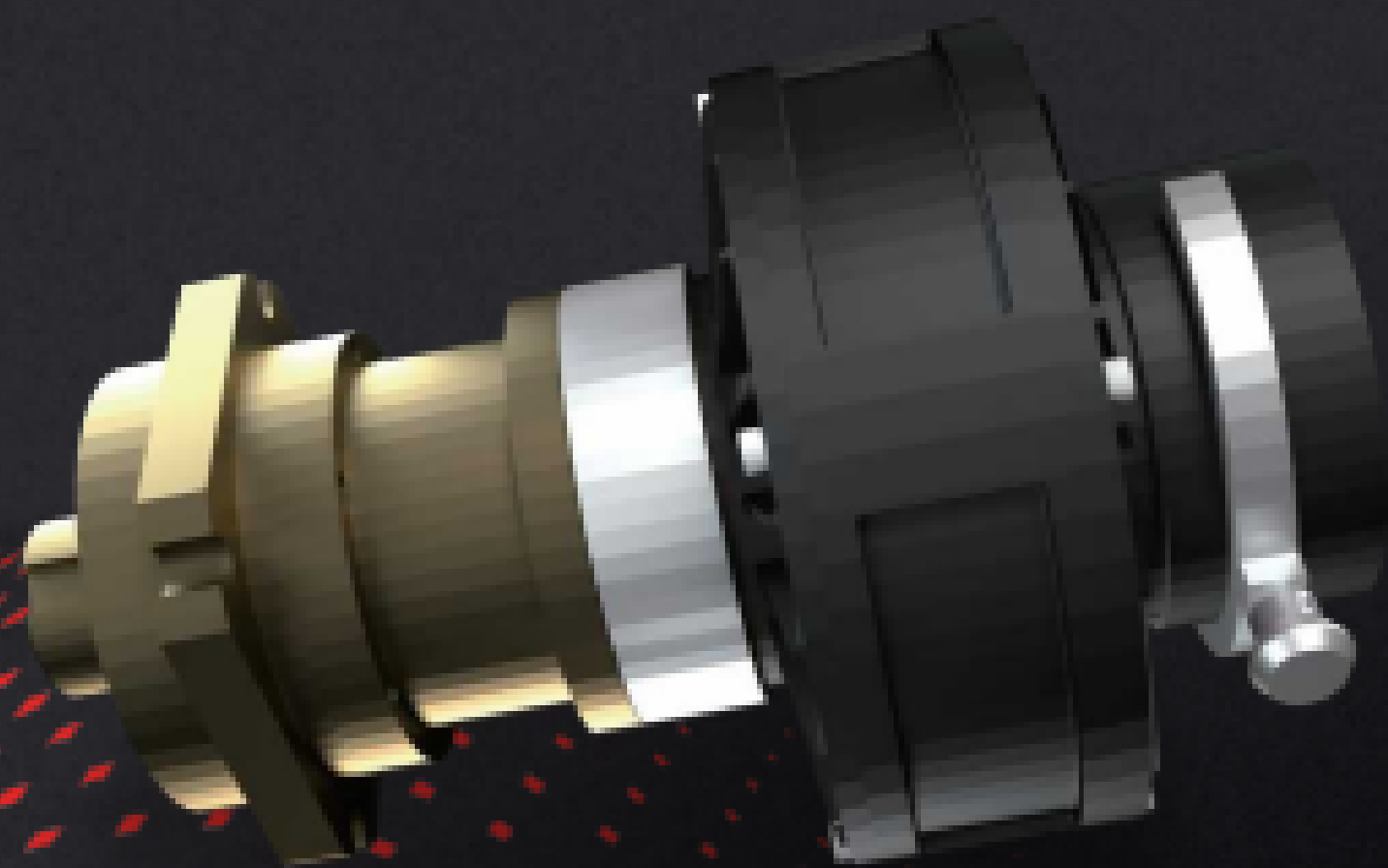


# POWER GENERATE SYSTEM

Mode permanent magnet motor with multi-level planetary gear transmission mechanism

Powerful Motor brings the constant torque, low heat, accurate speed control

multi-stage planetary gear brings the large speed ratio in small volume, high pulling torque

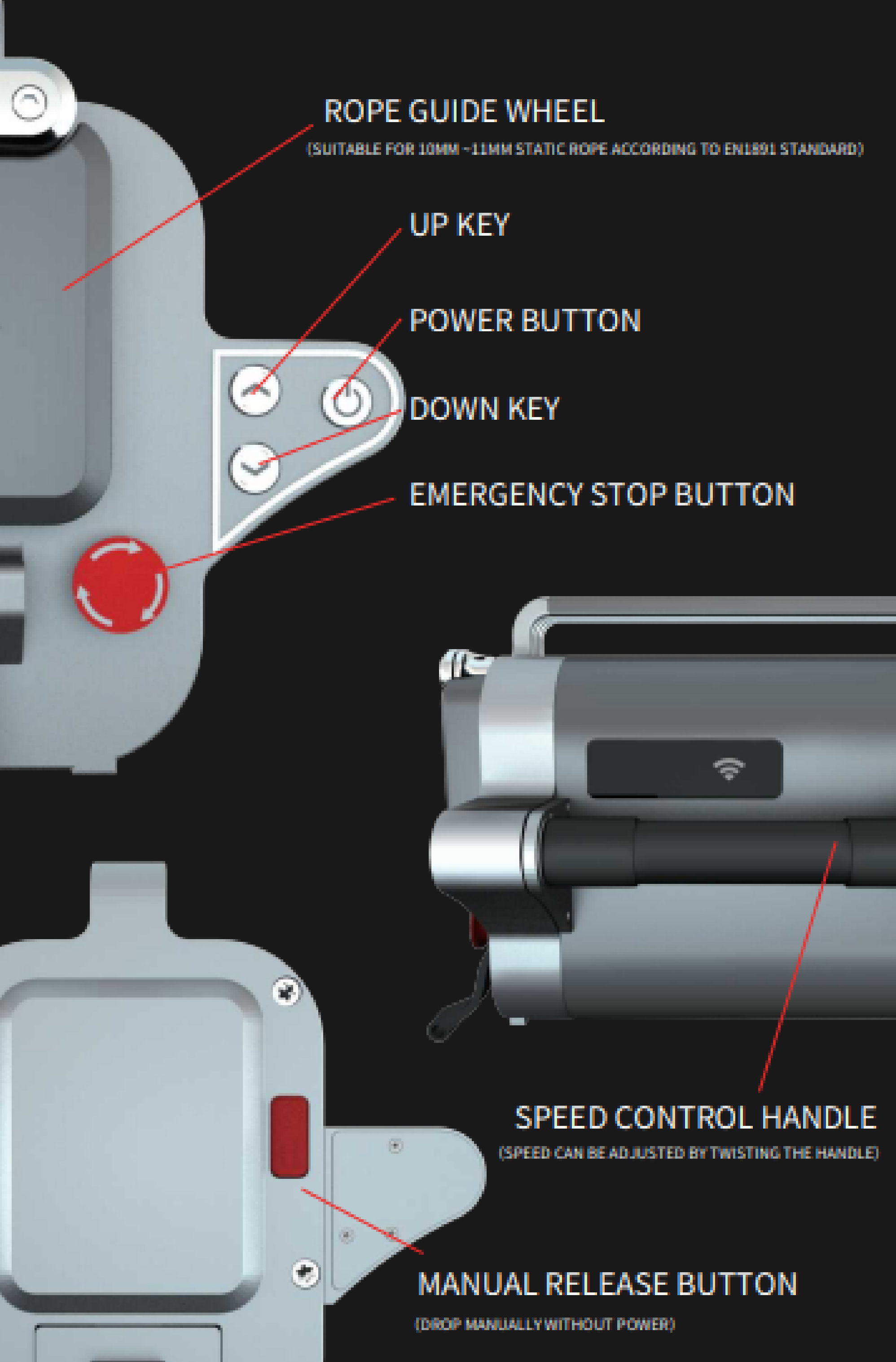


UP AND DOWN

## ONE KEY UP-DOWN EMERGENCY STOP

- Stepless speed control handle
- Multi-point connection for anti-falling harness or holding stuffs
- hot swapped power battery
- wireless wifi control module, max distance 100 meters
- easy & fast rope installing and replacing

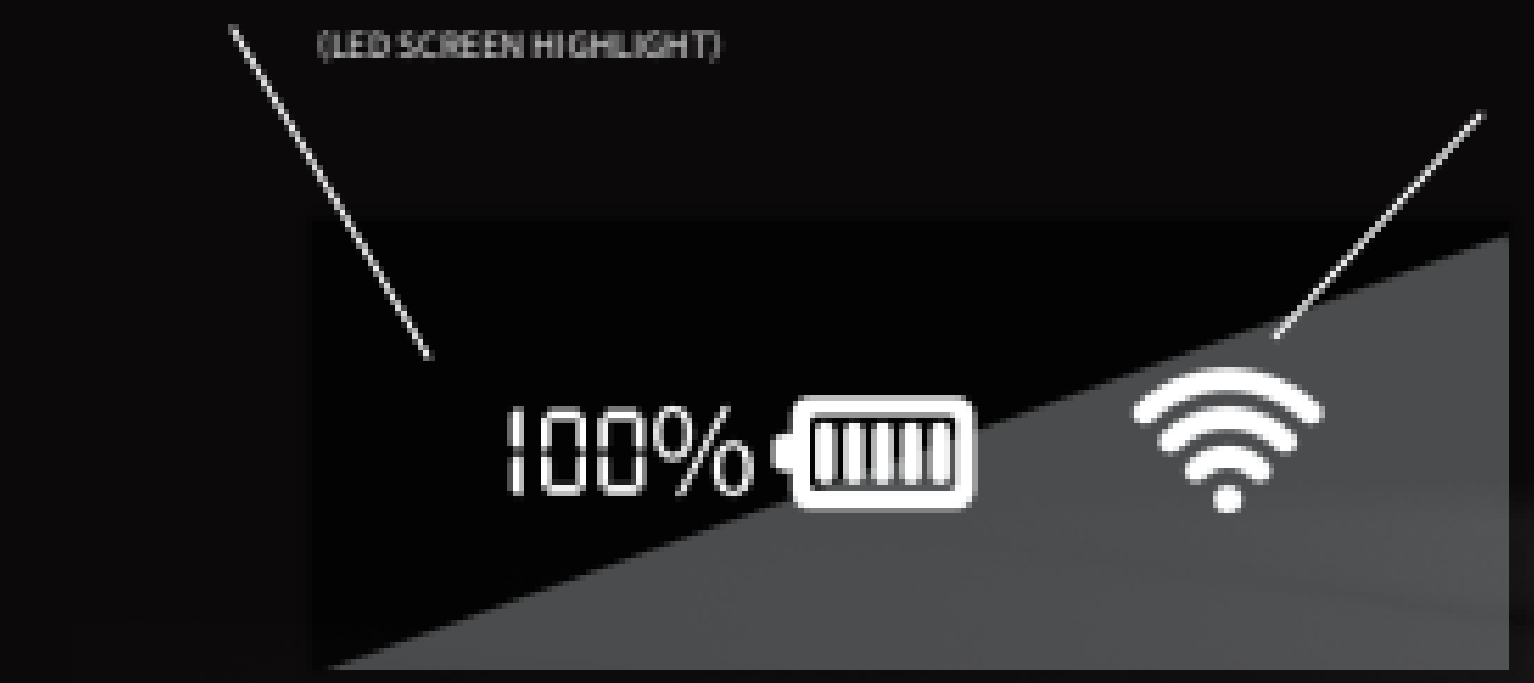




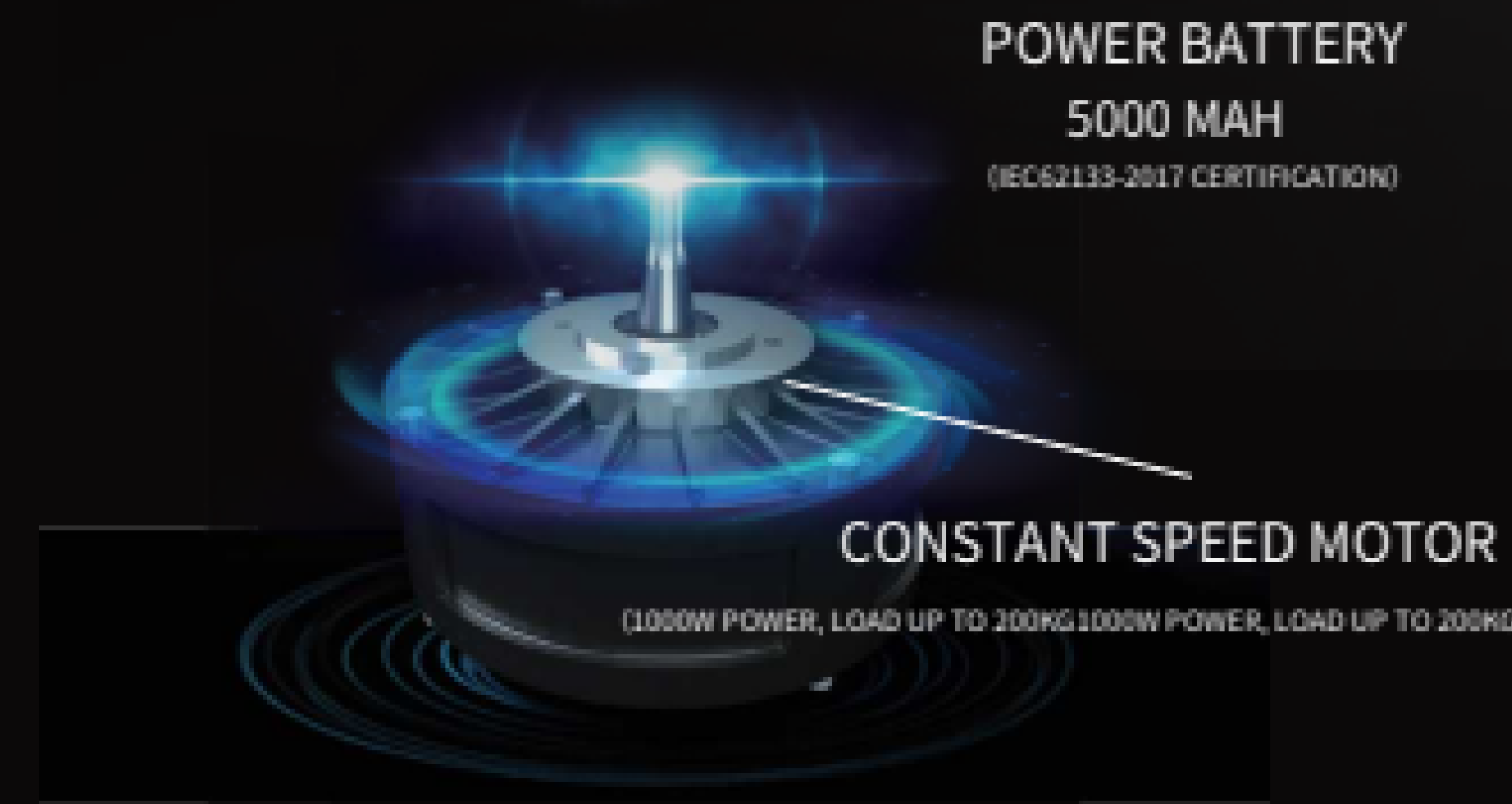
BATTERY CAPACITY DISPLAY

(LED SCREEN HIGHLIGHT)

WIFI SIGNAL



**POWER BATTERY**  
5000 MAH  
(IEC62133-2017 CERTIFICATION)



**CONSTANT SPEED MOTOR**  
(1000W POWER, LOAD UP TO 200KG)

## FUNCTION INTRODUCTION AND USE METHOD

# PRODUCT PARAMETERS

## SMART SPIDER PRO

### APPEARANCE MATERIAL

DURABLE AVIATION ALLUMINUM

### APPEARANCE SIZE

330\*265\*267(MM)

### BODY WEIGHT

14.3KG (INCLUDE BATTERY)

### BATTERY

5000MAH POWER BATTERY (HOT SWAPPED)

### VOLTAGE

36V

### MAXIMUM OPERATION TIME

15MIN (FULL LOADING)

### POWER

1000W

### MAX LOADING

200KG

### VARIABLE SPEED CONTROL

ASCENDING 0M/MIN~20M/MIN  
DESCENDING 0M/MIN~37M/MIN

### RUNNING DISTANCE (SINGLE BATTERY)

330M (120KG LOADING)

### EMERGENCY DESCENDING WHEN POWER OFF

HAVE

### EMERGENCY STOP

HAVE

### OPERATING TEMPERATURE

-20°C~+50°C

### PROTECTION GRADE

IP54

### STANDARD SAFETY BUCKLE

D-SAFETY BUCKLE

### WIFI

STANDARD

### WIFI MAX DISTANCE

100M

### CHARGER

SINGLE CHARGER\*1  
OR CHOOSE ONE CHARGING STATION ONE TO TEN

### ROPE SUGGESTED

EN1891 STANDARD, STATIC ROPE, WIRE DIAMETER 10MM-11MM, DUCTILITY SHALL NOT  
EXCEED 4%

# INNOVATION IN POWER ASCENDER

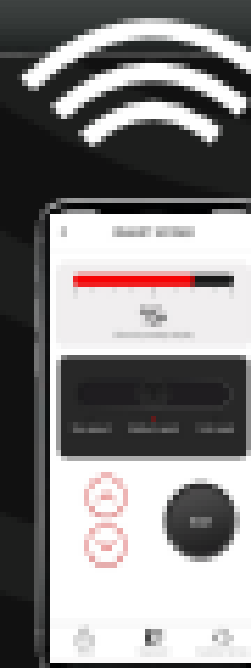
## APP CONTROL SYSTEM

Through the Mode APP, you can control the ascender in real time, and monitor the rise and fall of the ascender , as well as the electric capacity situation

The Mode App include store, training class, customer service, by which you can easily purchase accessories, watch tutorials, etc.. If there is still problems you can not solve, you can also contact the support of your supplier.



# SMART SPIDER PRO



APP CONTROL

CONVENIENT AND EFFICIENT

THE BATTERY MODULE

GET RID OF THE POWER CORD

WIFI LINK

GET RID OF SIGNAL LINE

ALUMINUM ALLOY BODY

EFFECTIVE PROTECTION OF THE INTERIOR