

# Smart Spider Powered Ascender

Fast Charging

Longer working life



POWERFUL MOTOR



APP CONTROL



CHANGEABLE SPEED CONTROL



FAST CHARGING



MULTIPLE APPLICATION SCENARIOS



SUPER DURABLE OUTER CASE



## Application scenarios

Multi core function



Height access      Wind turbine/blade maintenance

Power overhaul      Rescue & search

Bridge examine      Skyscraper maintain



Building exterior wall repairing

Building façade cleaning



Stage construction

Offshore service

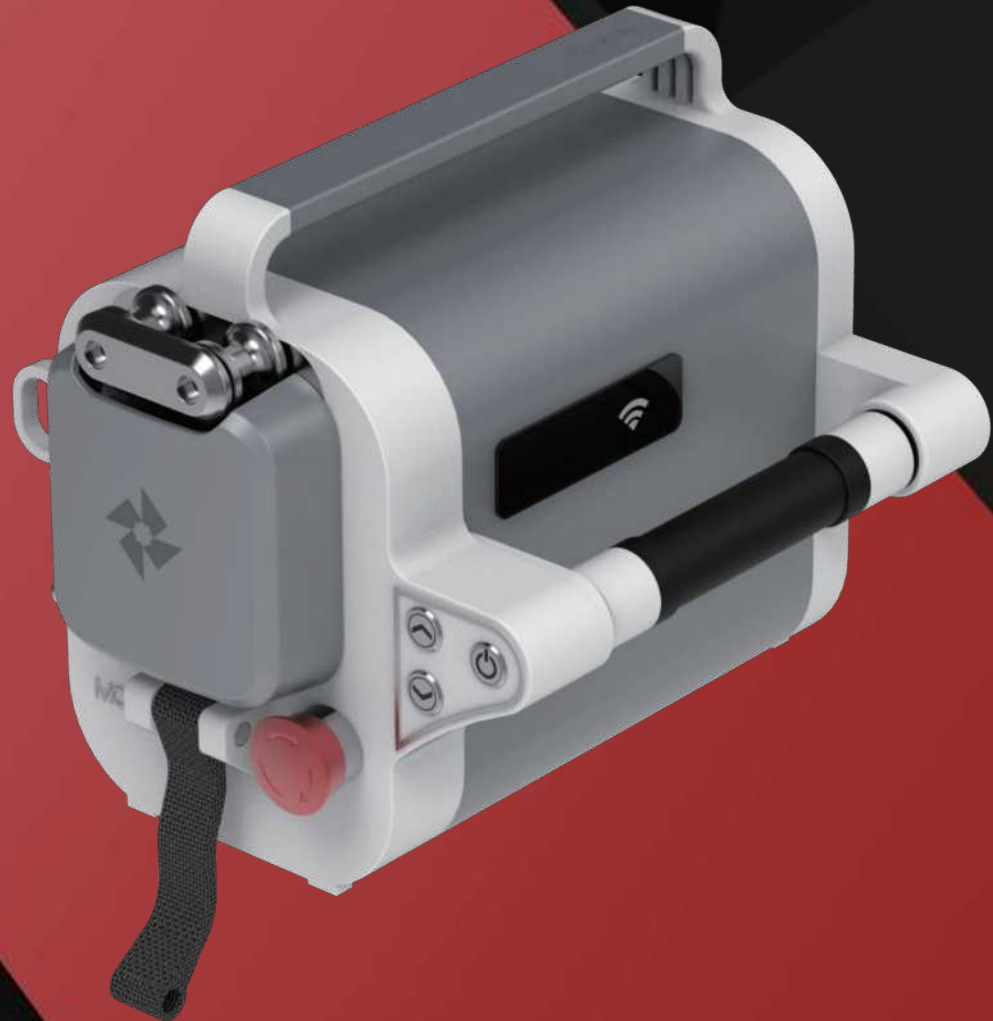
Industrial service

Tree maintenance



# Light alloy material cover Hard-wearing durable life

Aerospace light alloy material manufactured  
safety & comfortable to use  
Smooth feeling



**14.3KG  
WEIGHT**

## MODE ENERGY BLOCK

Self-developed Mode energy power management system

- Power charge and discharge protection
- Undervoltage, over current, over discharge, short circuit protection
- High temperature and low temperature active protection function

**200KG**

MAXIMUM LOADING

**330M**

MAXIMUM CLIMBING DISTANCE

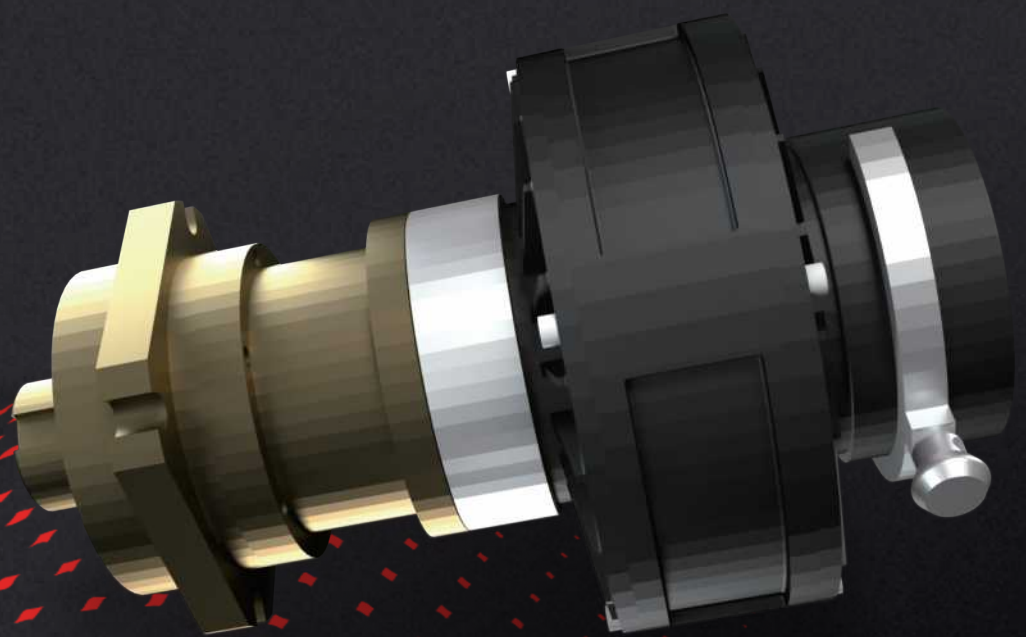


# POWER GENERATE SYSTEM

Mode permanent magnet motor with multi-level planetary gear transmission mechanism

Powerful Motor brings the constant torque, low heat, accurate speed control

multi-stage planetary gear brings the large speed ratio in small volume, high pulling torque

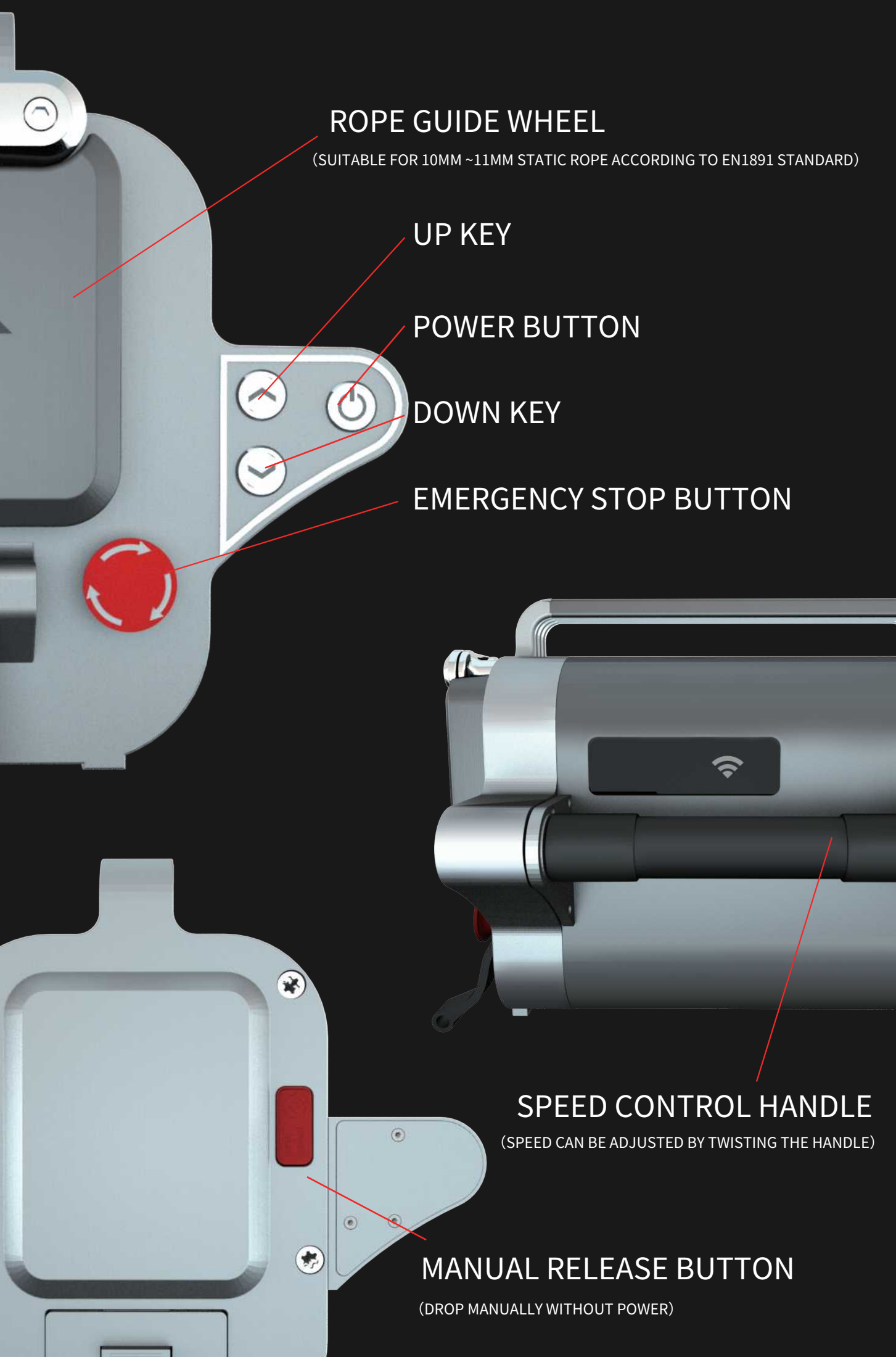


UP AND DOWN

## ONE KEY UP-DOWN EMERGENCY STOP

- Stepless speed control handle
- Multi-point connection for anti-falling harness or holding stuffs
- hot swapped power battery
- wireless wifi control module, max distance 100 meters
- easy & fast rope installing and replacing

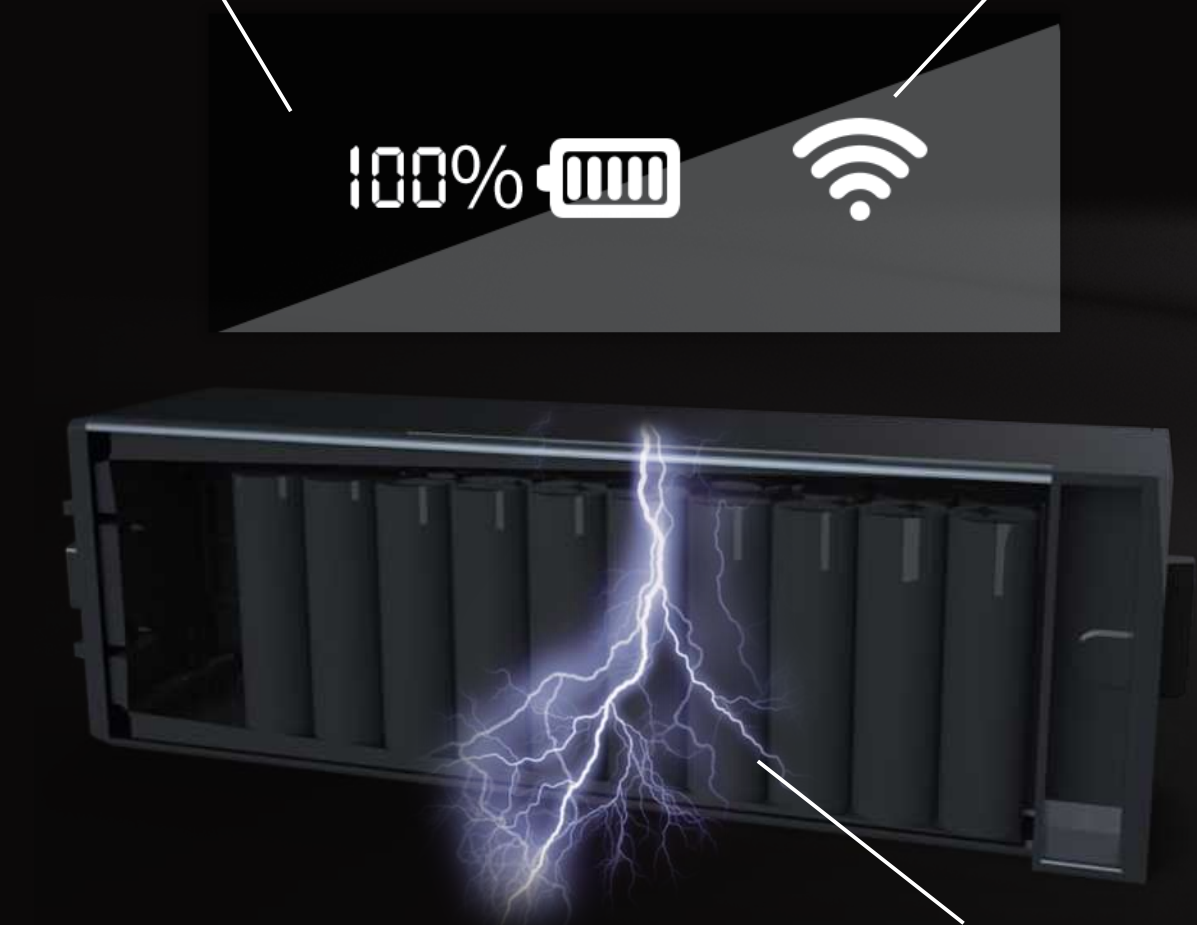




**BATTERY CAPACITY DISPLAY**

(LED SCREEN HIGHLIGHT)

**WIFI SIGNAL**



# FUNCTION INTRODUCTION AND USE METHOD

# PRODUCT PARAMETERS

## SMART SPIDER PRO

### APPEARANCE MATERIAL

DURABLE AVIATION ALLUMINUM

### APPEARANCE SIZE

330\*265\*267(MM)

### BODY WEIGHT

14.3KG (INCLUDE BATTERY)

### BATTERY

5000MAH POWER BATTERY (HOT SWAPPED)

### VOLTAGE

36V

### MAXIMUM OPERATION TIME

15MIN (FULL LOADING)

### POWER

1000W

### MAX LOADING

200KG

### VARIABLE SPEED CONTROL

ASCENDING 0M/MIN~20M/MIN  
DESCENDING 0M/MIN~37M/MIN

### RUNNING DISTANCE (SINGLE BATTERY)

330M (120KG LOADING)

### EMERGENCY DESCENDING WHEN POWER OFF

HAVE

### EMERGENCY STOP

HAVE

### OPERATING TEMPERATURE

-20°C~+50°C

### PROTECTION GRADE

IP54

### STANDARD SAFETY BUCKLE

D-SAFETY BUCKLE

### WIFI

STANDARD

### WIFI MAX DISTANCE

100M

### CHARGER

SINGLE CHARGER\*1  
OR CHOOSE ONE CHARGING STATION ONE TO TEN

### ROPE SUGGESTED

EN1891 STANDARD, STATIC ROPE, WIRE DIAMETER 10MM-11MM, DUCTILITY SHALL NOT

EXCEED 4%

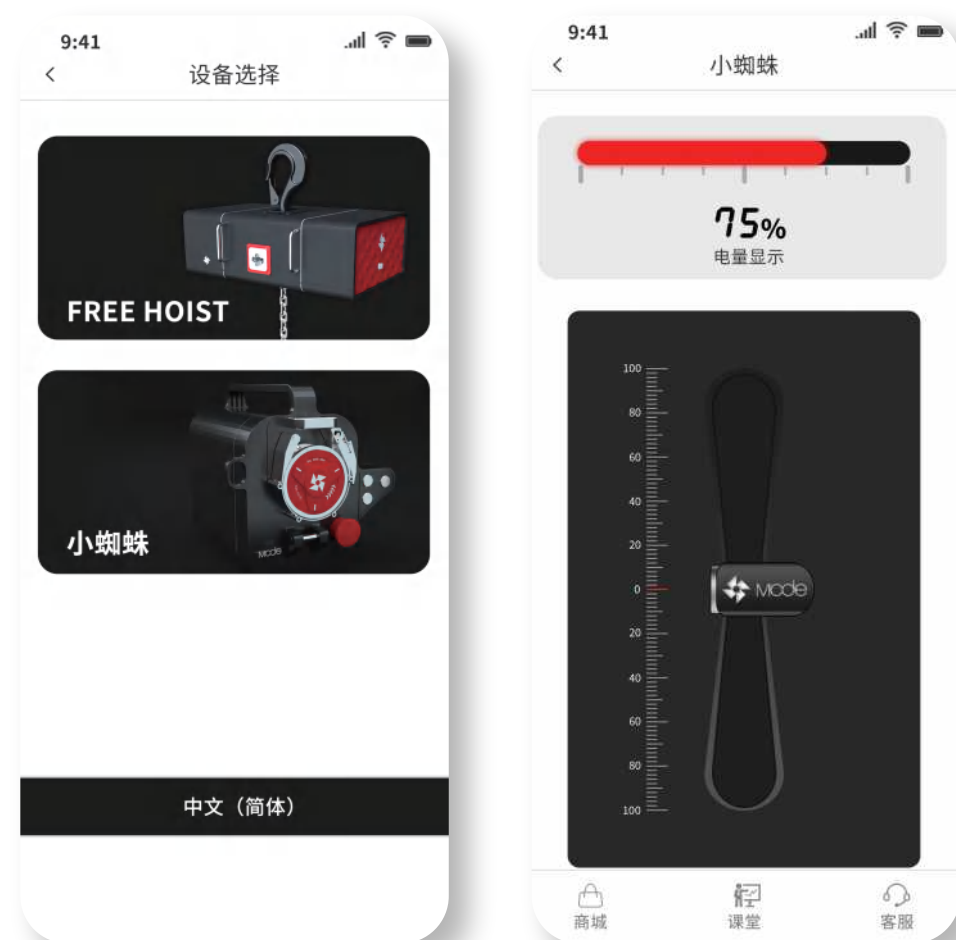
TACTICAL STYLE

# INNOVATION IN POWER ASCENDER

## APP CONTROL SYSTEM

Through the Mode APP, you can control the ascender in real time, and monitor the rise and fall of the ascender , as well as the electric capacity situation

The Mode App include store, training class, customer service, by which you can easily purchase accessories, watch tutorials, etc.. If there is still problems you can not solve, you can also contact the sales through [adsales@modehoist.com](mailto:adsales@modehoist.com) directly.



# SMART SPIDER PRO



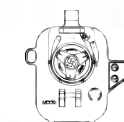
APP CONTROL  
CONVENIENT AND EFFICIENT



THE BATTERY MODULE  
GET RID OF THE POWER CORD



WIFI LINK  
GET RID OF SIGNAL LINE



ALUMINIUM ALLOY BODY  
EFFECTIVE PROTECTION OF  
THE INTERIOR